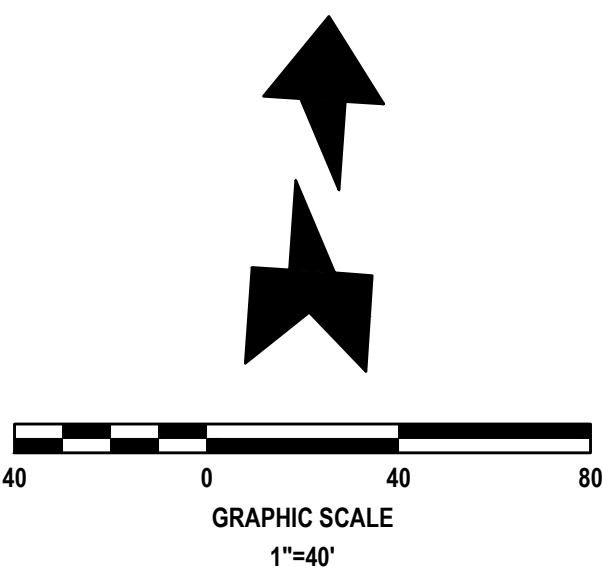
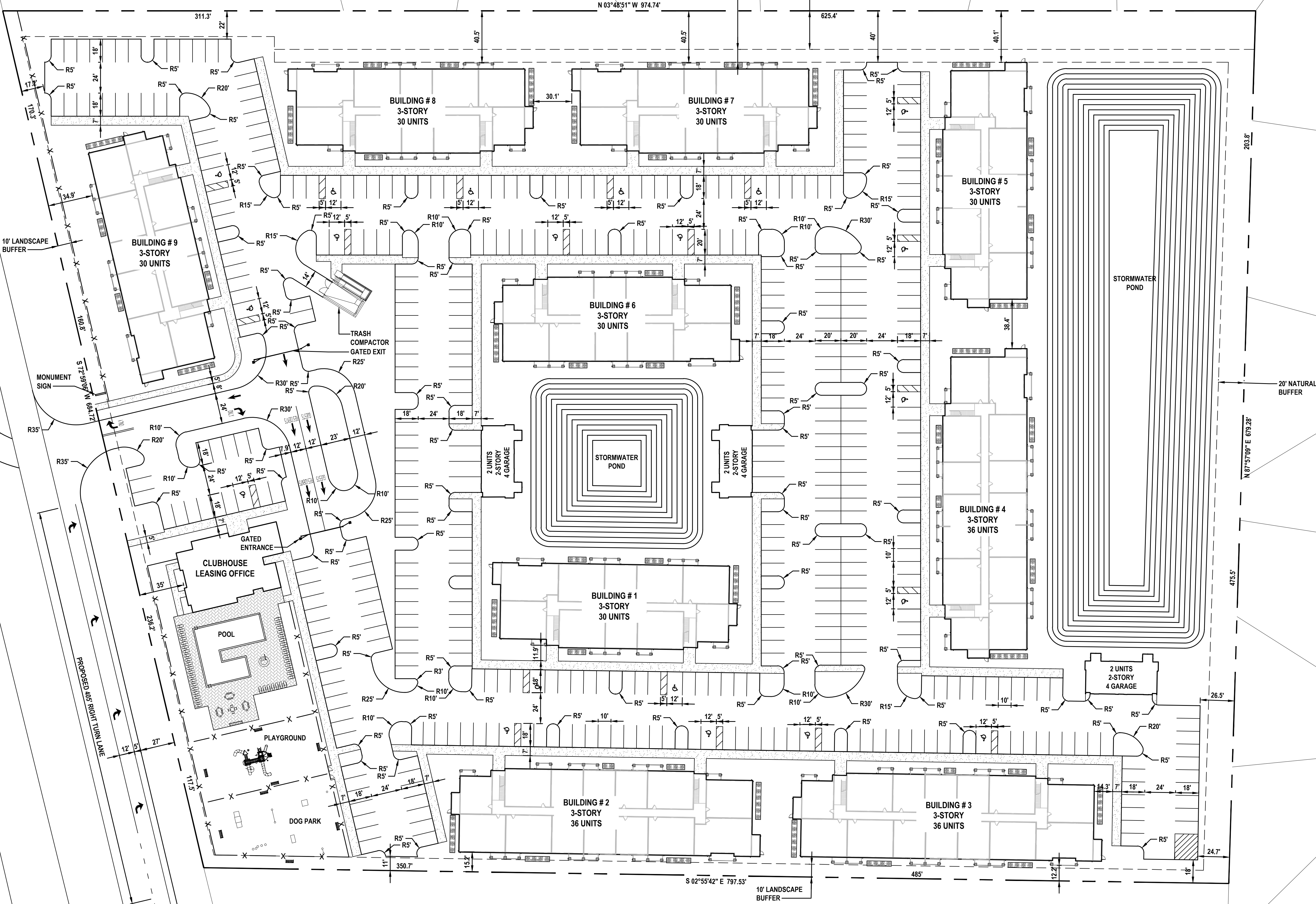


SITE DEVELOPMENT USAGE

PARKING REQUIREMENTS			
BUILDING USE	A. SF/UNITS	B. SPACES	D. REQ. SPACES
MULTI-FAMILY	294	1.5	441
GUEST PARKING 5%		0.05x441	23
TOTAL REQUIRED SPACES			464

PROVIDED PARKING		
	%	PROV. SPACES
STANDARD SPACES	93.1%	434
GARAGE SPACES	2.6%	12
ADA SPACES	4.3%	20
TOTAL PROVIDED SPACES		466

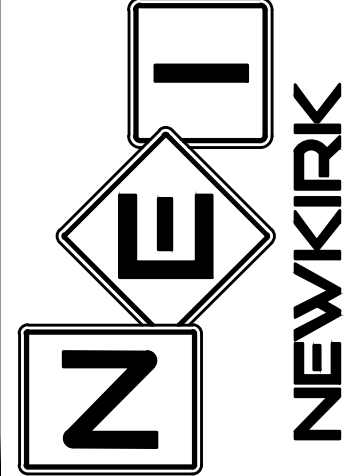
PROPOSED SITE COVERAGE		
AREA TYPE	SF	% OF SITE
BUILDING	127,714	29.32
ASPHALT PAVEMENT/ VUA	174,748	40.12
CONCRETE / SIDEWALKS	29,140	6.69
STORMWATER POND	75,111	17.24
GREEN SPACE	189,024	43.39
TOTAL SITE	595,737	100.0%
TOTAL IMPERVIOUS	331,602	55.7%
TOTAL OPEN SPACE	264,135	44.3%



REVISIONS

DATE	DESCRIPTION

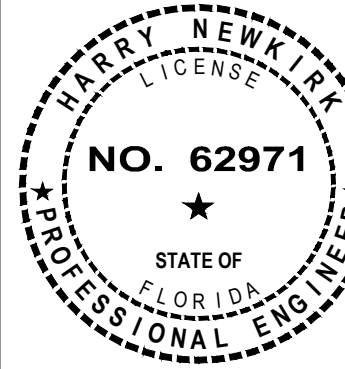
1230 North US1, Suite 3  
Ormond Beach, Florida 32174  
Phone (386) 872-7794  
www.Newkirk-Engineering.com  
C.E. # 300084  
L.C. # 2600584  
© 2013  
Civil Engineering,  
Transportation, CEI &  
Landscape Architecture



CONCEPTUAL SITE PLAN  
EDGEWATER MULTI-FAMILY  
U.S. HIGHWAY 1  
EDGEWATER, FL 32141

THIS DRAWING IS THE PROPERTY OF NEWKIRK ENGINEERING. ANY USE OR REPRODUCTION IN WHOLE OR PART IS PROHIBITED WITHOUT THE EXPRESSED WRITTEN CONSENT OF NEWKIRK ENGINEERING. COPYRIGHT 2013 ALL RIGHTS RESERVED.

THIS ITEM HAS BEEN DIGITALLY SIGNED AND SEALED BY HARRY NEWKIRK, PE # 62971 ON



PRINTED COPIES OF THIS DOCUMENT ARE NOT CONSIDERED SIGNED AND SEALED AND THE SIGNATURE MUST BE VERIFIED ON ANY ELECTRONIC COPIES.

PROJECT No:	2024-XX
DATE:	MARCH 2024
DESIGN BY:	HHN
DRAWN BY:	NWS
CHECKED BY:	HHN
SCALE:	1" = 40'
DRAWING NUMBER	