

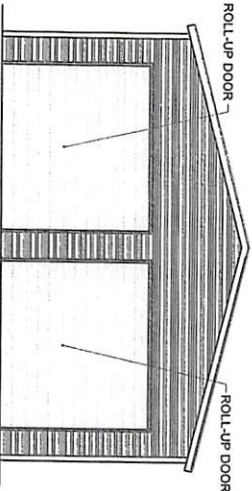
APPROVED PRODUCTS LIST

PRODUCT CATEGORY	SUB CATEGORY	MANUFACTURER	APPROVAL No. & DATE
STRUCTURAL COMPONENTS	ROOF DECK	CAROLINA CARPORTS, INC.	FL6596-1-R6 12/15/20
STRUCTURAL COMPONENTS	STRUCTURAL WALL	CAROLINA CARPORTS, INC.	FL6702-1-R6 12/15/20
EXTERIOR DOORS	SWINGING	ELKIR DOOR AND METAL COMPANY Series 407	FL 17595-5-R2 02/28/21
EXTERIOR DOORS	ROLL-UP	CAROLINA CARPORTS, INC.	FL16006-2-R5 12/16/20
EXTERIOR DOORS	ROLL-UP	CAROLINA CARPORTS, INC.	FL16006-4-R5 12/16/20

METAL FRAMING AND SIDING PREFABRICATED BY
CAROLINA CARPORTS, INC.
P.O. BOX 1253
DOBSON, NORTH CAROLINA 27017

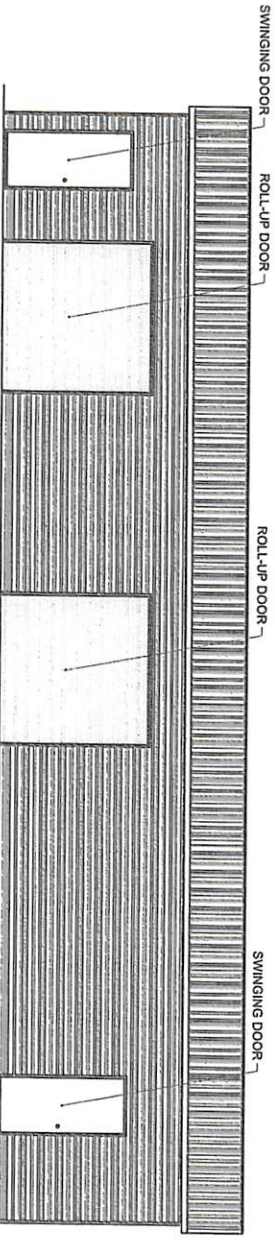
THESE ENGINEERING DRAWINGS ARE THE PROPERTY OF BECHTOL ENGINEERING & TESTING, INC. AND CAROLINA CARPORTS, INC. THESE DRAWING MAY NOT BE REPRODUCED WITHOUT THE WRITTEN CONSENT OF BECHTOL ENGINEERING & TESTING, INC. AND CAROLINA CARPORTS, INC.

THIS IS TO CERTIFY THAT THE CALCULATIONS AND SPECIFICATIONS HEREIN HAVE BEEN PREPARED BY THE UNDERSIGNED PROFESSIONAL ENGINEER, AND ARE IN ACCORDANCE WITH THE REQUIREMENTS OF SECTION 1609 OF THE FLORIDA BUILDING CODE, SEVENTH EDITION (2020).



FRONT ELEVATION

SCALE: 1/8" = 1'

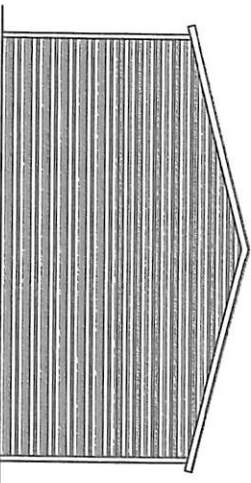


LEFT SIDE ELEVATION

SCALE: 1/8" = 1'

GENERAL NOTES:

- THESE PLANS PERTAIN ONLY TO THE STRUCTURE, INCLUDING MAIN WIND FORCE RESISTING SYSTEM, COMPONENTS AND CLADDING, AND BASE RAIL, ANCHORAGE, OTHER DESIGN ISSUES, INCLUDING BUT NOT LIMITED TO PLUMBING, ELECTRICAL, PROGRESS, PROPERTY SET-BACKS, FINISH FLOOR ELEVATION AND SLOPE, OR OTHER LOCAL ZONING REQUIREMENTS ARE THE RESPONSIBILITY OF OTHERS.
- THESE STRUCTURES ARE DESIGNED AS NON-HABITABLE UTILITY / STORAGE BUILDINGS, RISK CATEGORY II, CAPABLE OF SUPPORTING DEAD LOAD OF THE STRUCTURE AND APPLICABLE LIVE AND WIND LOADS. IMPROVEMENTS NOT SPECIFICALLY ADDRESSED HEREIN, INCLUDING DOORS, WINDOWS, SOLAR PANELS, LIGHTING, INTERIOR WALLS, CEILING FIXTURES, OR OTHER COMPONENTS NOT LISTED IN THE FBC APPROVED PRODUCTS LIST (THIS SHEET), AND NOT PROVIDED AND INSTALLED BY CAROLINA CARPORTS, INC., WHICH EXERT ADDITIONAL LOADS ON THE STRUCTURE SHALL BE AT THE OWNER'S RISK. BECHTOL ENGINEERING AND TESTING, INC., SHALL NOT BE RESPONSIBLE FOR STRUCTURAL DAMAGE OR FAILURE DUE TO THE APPLICATION OF ADDITIONAL LOADS.
- ALL STEEL TUBING SHALL BE 60 KSI GALVANIZED STEEL. ALL FASTENERS SHALL BE GALVANIZED OR STAINLESS STEEL.
- ALL COMPONENTS AND CLADDING SHALL BE INSTALLED ACCORDING TO MANUFACTURER'S INSTALLATION INSTRUCTIONS.
- ALL FIELD FRAMING CONNECTIONS SHALL BE #12-14 x 3/4" SELF DRILLING SCREWS WITHOUT CONTROL SEAL WASHER. ALL SHOP FRAMING CONNECTIONS SHALL BE WELDED.
- CONCRETE SHALL HAVE A MINIMUM COMPRESSIVE STRENGTH OF 2500 PSI AT 28 DAYS. THE REINFORCING STEEL SHALL BE MINIMUM GRADE 60. CONCRETE SLAB FOUNDATIONS SHALL BE REINFORCED WITH 6#6 - WT.4W1 A WELDED WIRE FABRIC COMPLYING WITH ASTM A 185, OR WITH SYNTHETIC FIBER REINFORCEMENT COMPLYING WITH ASTM C1116.
- CONCRETE ANCHORS SHALL BE TAPCON REINHEAD LOT 1/2" x 5" OR EQUIVALENT.
- POST/RAFTER BRACING: BRACE ON EVERY POST/RAFTER CONNECTION, EXCEPT FOR END WALLS AND GABLE ENDS.
- SLAB FOUNDATION SUBGRADE SOILS SHALL BE TREATED AND COVERED WITH 6 MIL VAPOR RETARDER PER SECTION R316.1 OF THE FLORIDA BUILDING CODE SEVENTH EDITION (2020). RESIDENTIAL AND SECTION 1616.1 OF THE FLORIDA BUILDING CODE SEVENTH EDITION (2020) - BUILDING. SOIL LOAD BEARING PRESSURE OF 2000PSF IS ASSUMED.
- 14 GA FRAMING: 2-1/2" x 2-1/2" TUBE STEEL (TS) WITH 2-1/4" x 2-1/4" TS NIPPLES.
- 12 GA FRAMING: 2-1/4" x 2-1/4" TS WITH 2" x 2" TS NIPPLES.
- FOR ROOF SLOPES LESS THAN 7 DEGREES, SEAL ALL PANEL OVERLAPS WITH BUTYL TAPE OR OTHER SUITABLE SEALANT.
- FOR CONTINUOUS REINFORCING, MINIMUM BAR OVERLAP SHALL BE 40 BARS DIAMETERS (25" FOR #5 REBAR)



REAR ELEVATION

SCALE: 1/8" = 1'



Reviewed for Code Compliance
City of Edgewater
Building Department

NOTE: 12 GA FRAMING

OCCUPANCY GROUP:	U
CONSTRUCTION TYPE:	II-B
RISK CATEGORY:	I
BUILDING ENCLOSURE TYPE:	ENCLOSED
WIND EXPOSURE CATEGORY:	C
ULTIMATE WIND SPEED (MPH):	130
NOMINAL DESIGN WIND SPEED (MPH):	101
MEAN ROOF HEIGHT (FEET):	11.44
ROOF ANGLE (DEGREES):	14.0
INTERNAL PRESSURE COEFFICIENT:	+0.18 / -0.18
DESIGN PRESSURES (PSF):	
ROOF:	
ZONE 1:	+16.0 / -26.4
ZONE 2a:	+16.0 / -26.4
ZONE 2b:	+16.0 / -42.0
ZONE 2c:	+16.0 / -42.0
ZONE 3a:	+16.0 / -42.0
ZONE 3c:	+16.0 / -48.7
WALLS:	
ZONE 4:	+20.2 / -22.1
ZONE 5:	+20.2 / -25.7
SWINGING DOOR:	+21.2 / -27.8
ROLL-UP DOOR:	+19.4 / -24.1

BECHTOL ENGINEERING AND TESTING, INC.
605 WEST NEW YORK AVENUE
DELAND, FLORIDA 32720

Digitally signed by
Love B Patel
Date: 2023.08.07 17:46:18 -0400

Love B. Patel, P.E.
Senior Engineer
Love B. Patel, P.E., State of Florida
Professional Engineer, License No. 90753

BECHTOL ENGINEERING AND TESTING, INC.

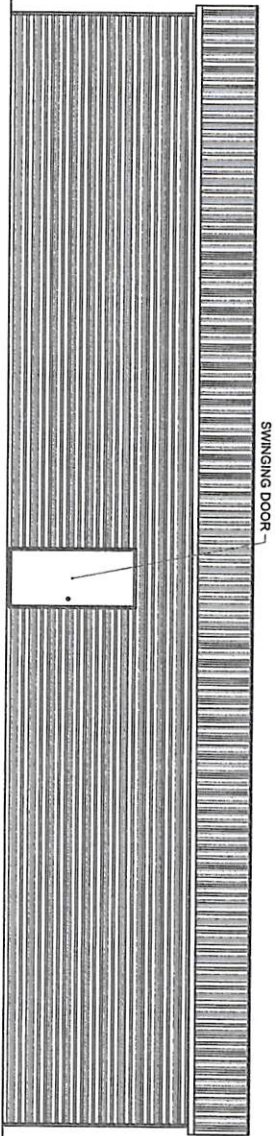
PROFESSIONAL ENGINEER

FLORIDA

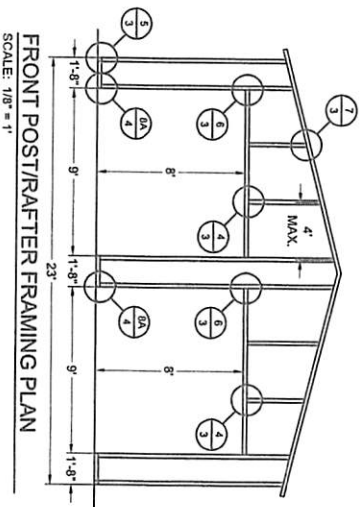
No. 90753

PROPOSED UTILITY STRUCTURE
2609 QUEEN PALM DRIVE
EDGEWATER, VOLUSIA COUNTY, FLORIDA

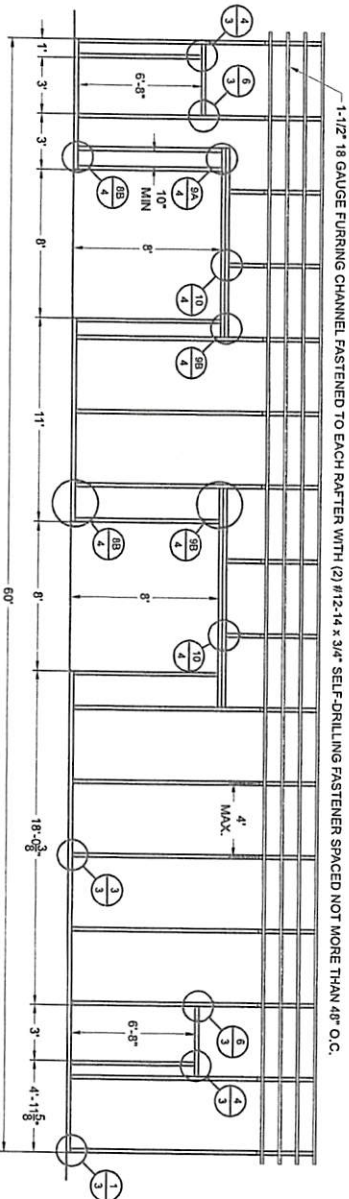
PROJECT	DATE
BECHTOL ENGINEERING	07/31/2023
AND TESTING, INC.	
DESIGN	SCALE
CS	NTS
	PROJECT NO.
	G23001



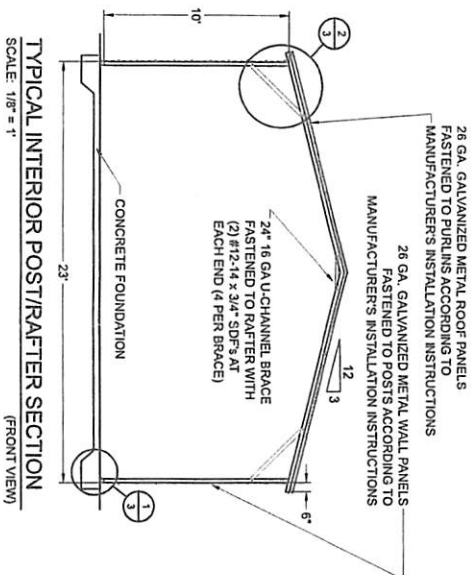
RIGHT SIDE ELEVATION
SCALE: 1/8" = 1'



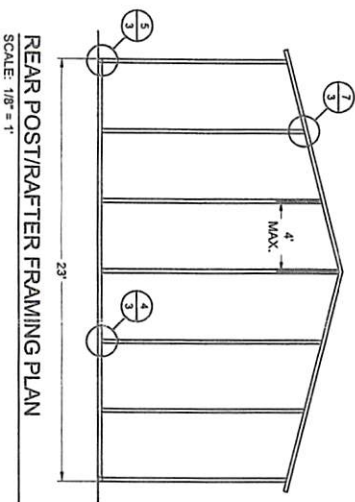
FRONT POST/RAFTER FRAMING PLAN
SCALE: 1/8" = 1'



LEFT SIDE POST/RAFTER FRAMING PLAN
SCALE: 1/8" = 1'



TYPICAL INTERIOR POST/RAFTER SECTION
(FRONT VIEW)
SCALE: 1/8" = 1'



REAR POST/RAFTER FRAMING PLAN
SCALE: 1/8" = 1'

BECHTOL ENGINEERING AND TESTING, INC.
605 WEST NEW YORK AVENUE
DELAND, FLORIDA 32720

Love B
Patel
Senior Engineer, P.E., State of Florida
Professional Engineer, License No. 90753
This firm has been digitally signed and sealed by Love B. Patel, P.E.
on the date indicated in this seal. Printed copies of this document are not considered
signed and sealed, and the signature must be verified on any electronic copy.

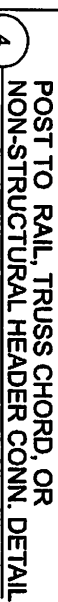
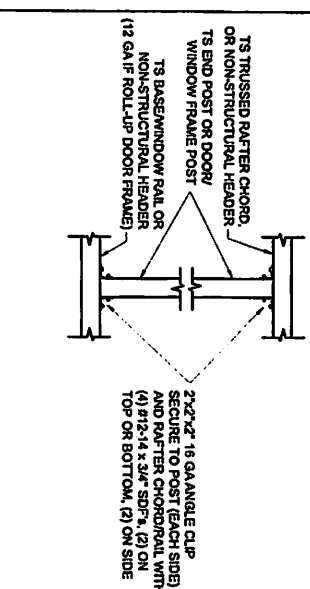
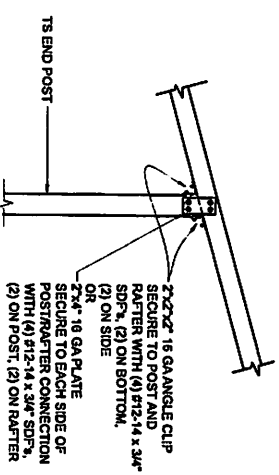
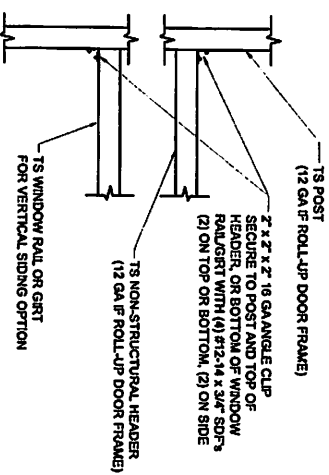
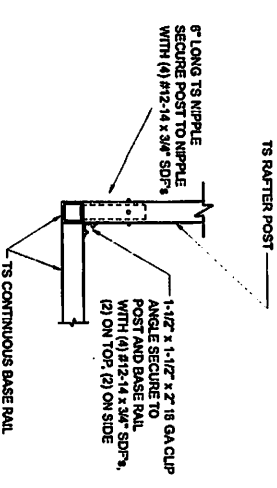
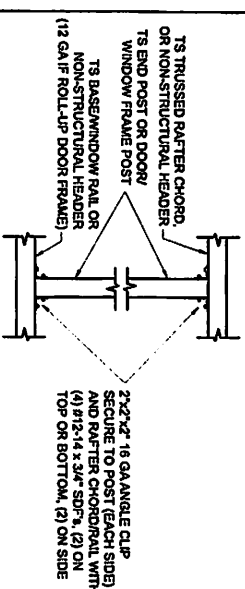
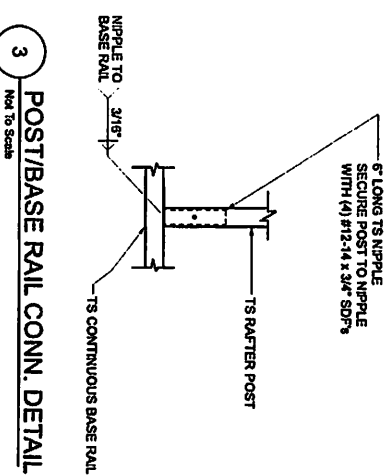
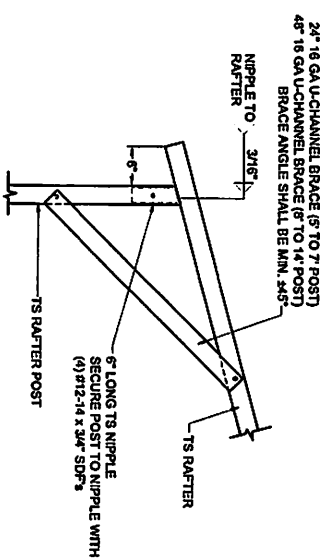
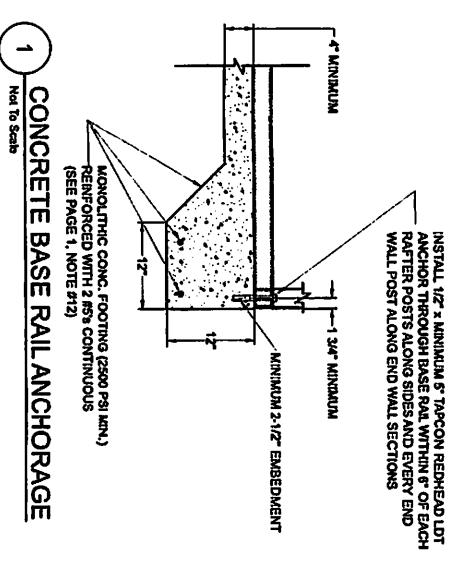
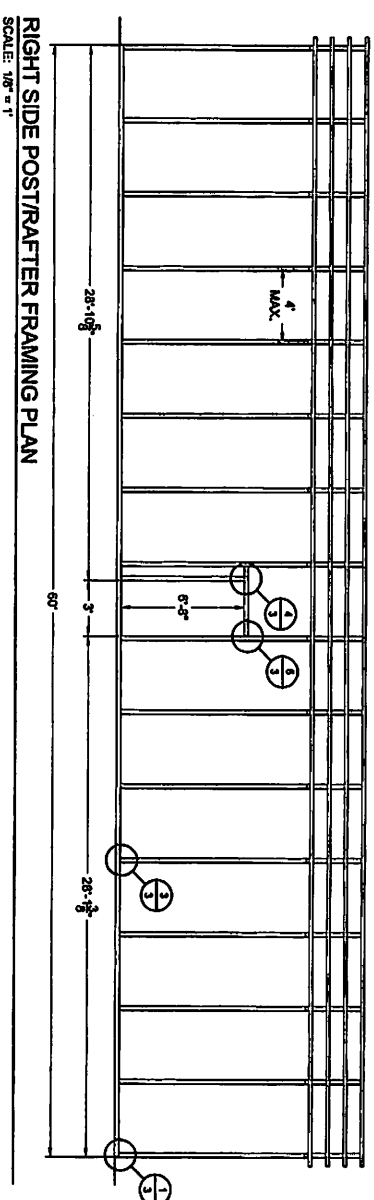
Digitally signed by Love B. Patel
Date: 2023.08.04 17:46:22 -0500

LOVE B. PATEL
LICENSE
No. 90753
STATE OF
FLORIDA
PROFESSIONAL
ENGINEER

PROPOSED UTILITY STRUCTURE
2609 QUEEN PALM DRIVE
EDGEWATER, VOLUSIA COUNTY, FLORIDA

BECHTOL ENGINEERING AND TESTING, INC.
CONSULTING GEOTECHNICAL, ENVIRONMENTAL, AND MATERIALS TESTING ENGINEERS
C:\Users\B.Patel\OneDrive\Documents\Projects\2609 Queen Palm Drive\2609 Queen Palm Drive.dwg

DESIGN	BC	SCALE	NTS
CHECKED	CS	PROJECT NO.	G23001
APPROVED	LP	SHEET NO.	2 OF 4



BIECHTEL ENGINEERING AND TESTING, INC.
605 WEST NEW YORK AVENUE
DELAND, FLORIDA 32720

Love B Patel

Sealant Engineer
Love B. Patel, P.E., State of Florida,
Professional Engineer, License No. 90763

The State has been digitally signed and sealed by Love B. Patel, P.E.

You are advised to verify the digital signature of the document and are cautioned against its use if it does not pass verification. Please contact the signatory for more information regarding the digital signature process.

Digitally signed by Love B. Patel
DN: cn=Love B. Patel, o=BIECHTEL, ou=Florida, email=love@biechtel.com, c=US

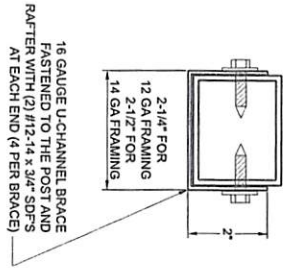
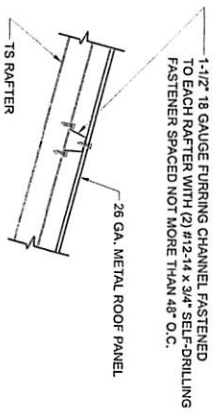
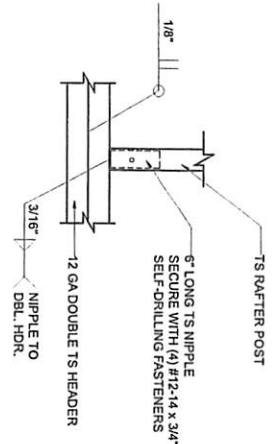
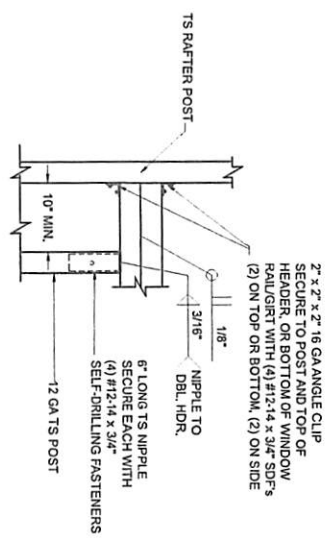
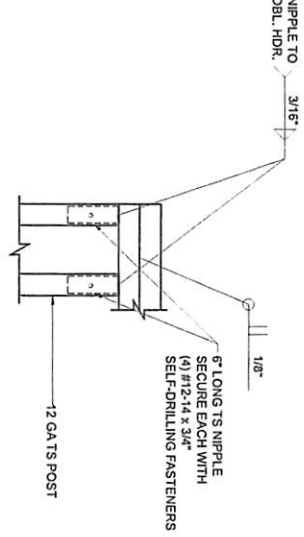
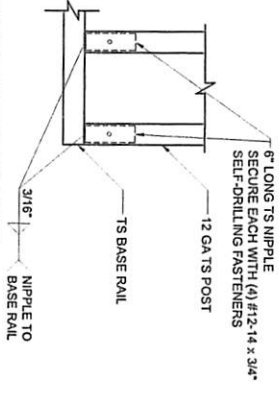
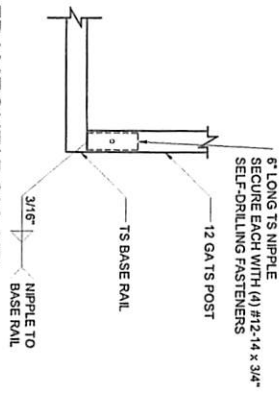
No. 90763
★
STATE OF FLORIDA
PROFESSIONAL ENGINEER
LOVE B. PATEL LICENSE

PROPOSED UTILITY STRUCTURE
2609 QUEEN PALM DRIVE
EDGEWATER, VOLUSIA COUNTY, FLORIDA

**BECHTEL ENGINEERING
 AND TESTING, INC.**

CONSULTING ENGINEERING, ENVIRONMENTAL, AND SURVEYING TESTING SERVICES
 CONTRACTING IN AGRICULTURE AND RELATED INDUSTRIES

FIELD		OFFICE	
DESIGNED BY	DC	SCALE	NTS
CHECKED BY	CS	PROJECT NO.	625001
APPROVED BY	LP	SHEET 3 OF 4	



10 RAFTER POST/HEADER DETAIL
Not To Scale

ROOF PANEL ATTACHMENT
Not To Scale

BRACE SECTION
Not To Scale

BECHTOL ENGINEERING AND TESTING, INC.
605 WEST NEW YORK AVENUE
DELAND, FLORIDA 32720

Digitally signed by
Love B Patel
Date: 2023.08.04
17:46:47 -04'00'

Love B. Patel, P.E.
Professional Engineer, License No. 90753
State of Florida
This stamp has been digitally signed and sealed by Love B. Patel, P.E.
on the date adjacent to the seal. Printed copies of this document are not considered signed and sealed, and the signature must be visible on any printed copies.

LOVE B. PATEL
No. 90753
*
STATE OF FLORIDA
PROFESSIONAL ENGINEER

PROPOSED UTILITY STRUCTURE
2609 QUEEN PALM DRIVE
EDGEWATER, VOLUSIA COUNTY, FLORIDA

BECHTOL ENGINEERING AND TESTING, INC.

FIELD	DATE
BC	07/21/2023
NTS	
CS	6/24/2001

CONSULTING BECHTOL ENGINEERING AND MATERIALS TESTING ENGINEERS
Copyright © 2003 by BECHTOL